



KISC

KAUAI INVASIVE SPECIES COMMITTEE

MEETING SUMMARY

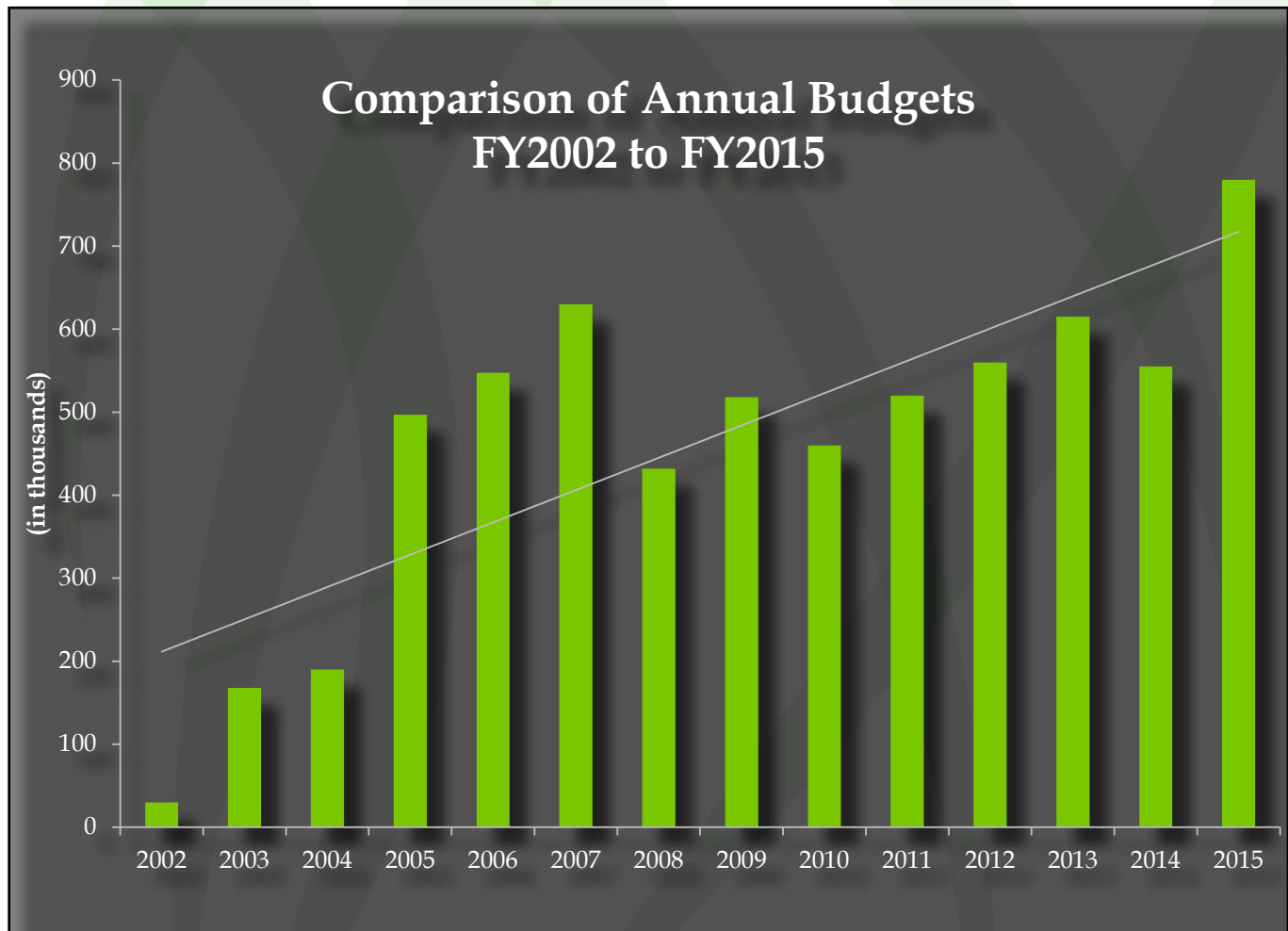
On Monday, September 22, 2014, KISC held a general meeting to review work performed over the past year. This meeting also focused on the restructure of the committee and roles within the committee. The following information is a synopsis for those who were unable to attend. Please see pages 13-15 for more information on new Kauai Invasive Species Committee structure and Strategic Plan.

Oct 2011 - Oct 2013

1

Annual Meeting

Funding Summary



The general trend for KISC funding has been upward since its inception in FY02. The new level of funding is at a level that staff feel is adequate for maintaining a high quality Early Detection and Rapid Response Network. It is our goal to maintain funding at this level.

This publication made possible through a grant from USDA Forest Service. This institution is an equal opportunity provider.

MEETING SUMMARY

KISC Staffing

Oct 2013 - Sept 2014

2

Annual Meeting



KISC welcomes Ray Kahaunaele, past KISC Survey Response Tech, as the new Field Operations Supervisor!

Current Staffing

Vincent Vea (3 months)
Bill Lucey (3 months)
Ray Kahaunaele (4 months)
Pat Gmelin (4 years)
Tiffani Keanini (5 years)
Cleve Javier (5 years)
Mugs Kaneholani (7 years)
Joe Aguon-Kona (10 years)

New Positions FY15

Early Detection Botanist
Outreach Coordinator
Data and Mongoose Field Tech



KISC welcomes Bill Lucey as the new KISC Project Manager!



Brown Tree Snake Training

Ray Kahaunaele, Field Operations Supervisor, traveled to Guam to train for the Brown Tree Snake Rapid Response Team Training. This training is a program run by US Geological Survey based out of Fort Collins Science Center. It's main goal is to have trained response people on all Pacific islands for a rapid response to snake sightings.

Outreach Highlights

KISC's methods of "spreading the word" about invasive species involved a lot of different venues, activities, and publications. Highlights during this period included: events, displays, give-away items, brochures and posters, newsletters, service learning projects, Early Detection Workshops, and media interface.



Service Learning Projects



MEETING SUMMARY

EVENTS

- Garden Fairs
- Banana Poka Roundups
- KCC Earth Days
- Arbor Days
- Agricultural Education and Awareness Days
- KCC Market
- County Farm Bureau Fairs
- Hawai'i Conservation Conference
- Little Fire Ant Movie Premier
- NTBG Music Legends
- HISAW Kauai Volunteer Day with KRCP

PRESENTATIONS

- Kilauea Neighborhood Association
- ED Workshop - HDOT
- ED Workshop - KRCP-HYCC
- ED Workshops - KFBRP
- ED Workshops - KESRP
- ED Workshops - KLIC
- ED Workshops - UH Master Gardener's
- ED Workshops - Rotary Clubs
- KCA Meetings
- ED Workshop - Kilauea Point Wildlife Refuge
- ED Workshop - Kapa'a High School JROTC

VOLUNTEERS TO NOTE

- Miconia volunteer workdays - KRCP, Plant Pono, The Garden Island Newspaper

MEETING SUMMARY

Outreach Continued...

Oct 2013 - Sept 2014

4

Annual Meeting

MEDIA

- KISC and Keren Gundersen recognition at HISAW and by County of Kauai
- Articles in the Star Advertiser and The Garden Island and multiple internet articles regarding Bingabing discovery, Miconia, LFA on Kauai, KISC work, and Coqui frogs
- Television coverage regarding the discovery of Bingabing in Hanalei
- KISC as guest on KKCR radio
- Chiefess Kamakahele Middle School media project re: Miconia

DISPLAYS

- Educational display at Princeville Library
- Signage at Lihue Airport, Nawiliwili Harbor, and Young Brothers
- Traveling Mongoose Display featured at Schools and Libraries across the island
- Environmental Safety posters installed in KFD Sparky Trailer

SCHOOL VISITS

- Waimea High School (5 classes)
- KEO Preschool
- Kamehameha Spring Program - Student volunteer trip and service learning project



New outreach materials produced include brochures, newsletters, pest alerts, posters, and educational flyers.

Informative Helicopter tour with Senator Gabbard and Rep. Lee



Environmental Safety posters installed on KFD Sparky Trailer. KISC "Cootie Catcher" game corresponds with posters.



This year's new mongoose campaign: the traveling display was featured at schools and libraries across the island.



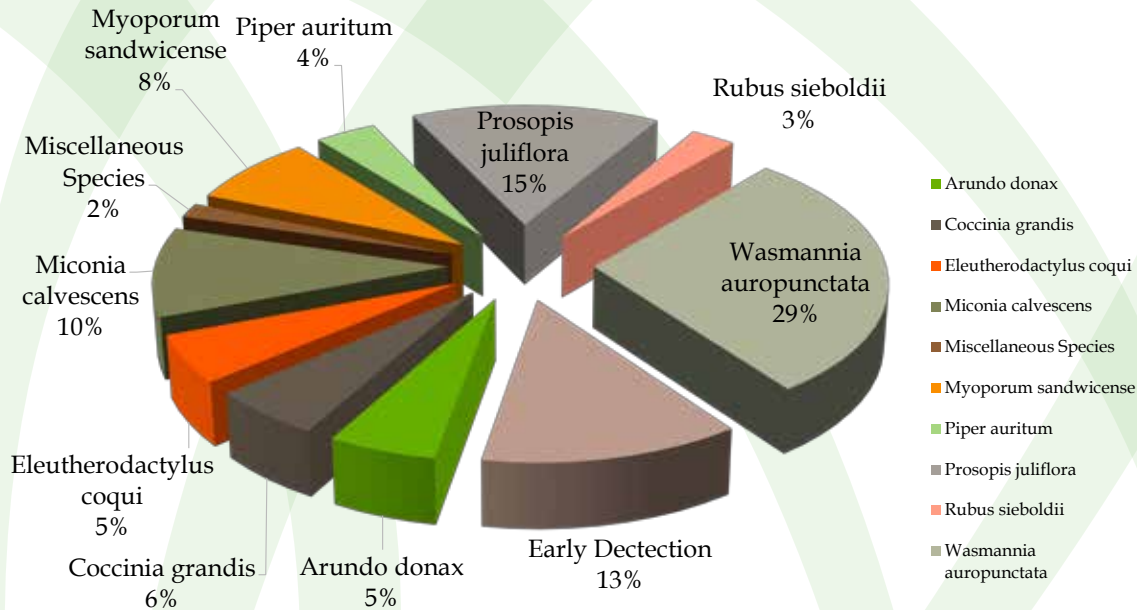
Priority Species Update

KISC has been making great progress on our priority species and the example graphs on the following pages show clearly the success we are having. Work hours, depicted in the pie-chart below, are distributed quite well over all of our priority species, with increased attention to Early Detection work (ED Species), Little Fire Ants, and Long Thorn Kiawe.

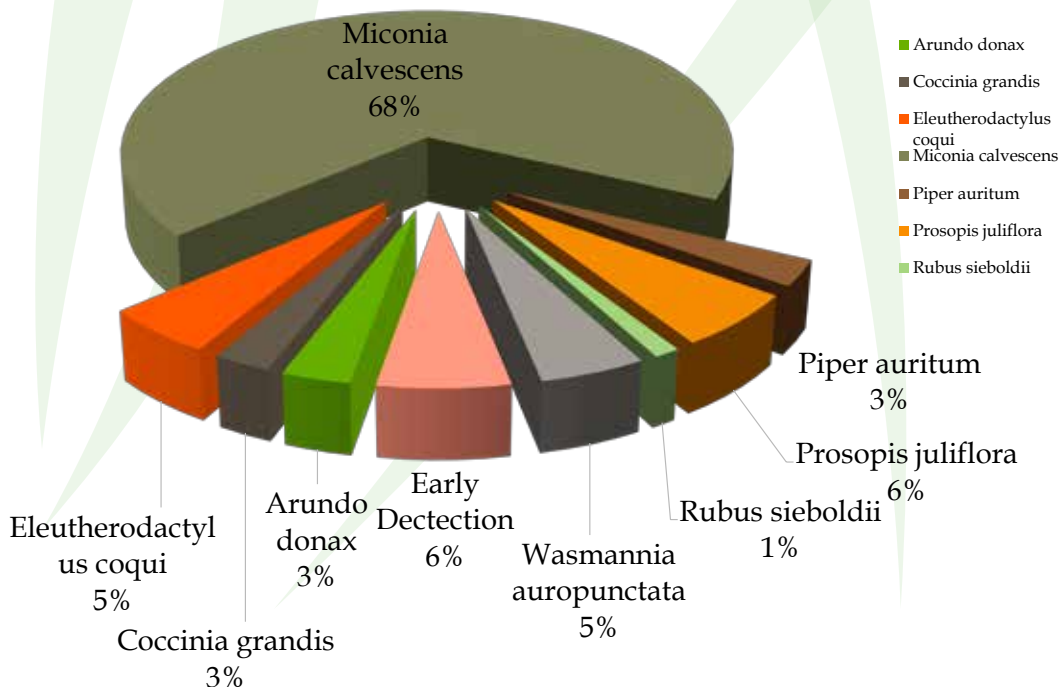
MEETING SUMMARY

Acres surveyed by species reflected in the bottom chart indicate miconia as the priority plant species and the work we can do from the air. Utilizing HBT helps to bring both the person-hours and costs done.

KISC Total Hours by Species



KISC Survey Acres by Species



MEETING SUMMARY

Priority Species Update Continued...

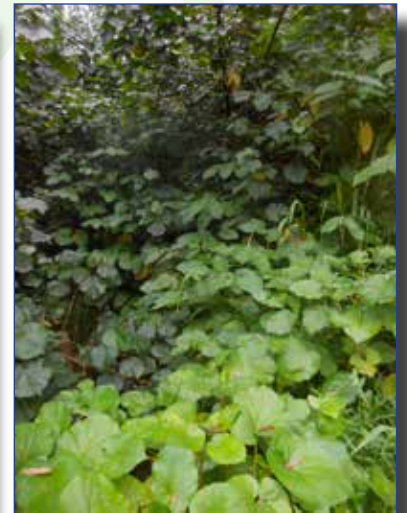
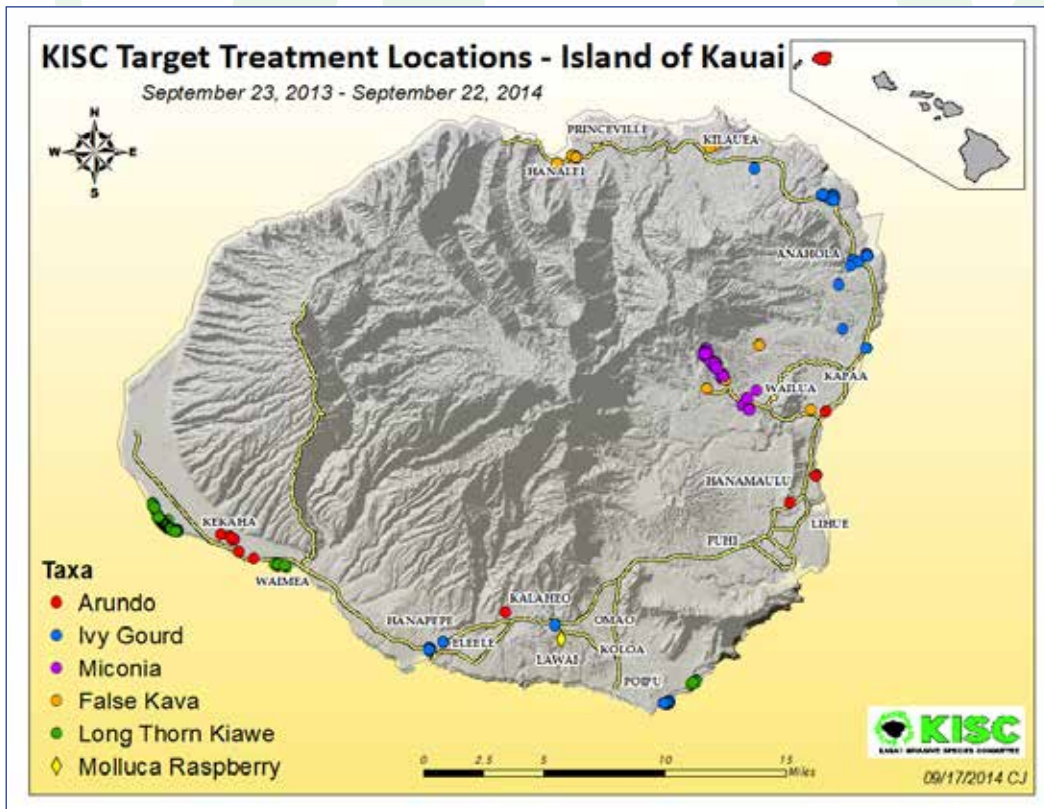
The table below shows our overall numbers regarding the species we worked on during the period of September 2013 to September 2014.

Oct 2013 - Sept 2014

6

Annual Meeting

Common Name	Survey Acres	Total Mature Controlled	Total Immature Controlled	ISC Work Hours
ED Species	578	382	2121	546
Arundo	84	79		238
Ivy Gourd	70	660	692	233
Coqui frog	138	3	1	543
Miconia	1824	1	309	366
False Kava	75	233		160
LTK	159	51	12696	669
Moluccas raspberry	31.74	1400	900	111
LFA	129			916



False Kava infestation

This map shows the treatment areas for our target species we worked on during the period of September 2013 to September 2014.

Priority Species Update Continued...

MEETING SUMMARY

One Mature *Miconia* was found from Sept 2013- Sept 2014. This was a direct result from an article published in the Garden Island Newspaper.

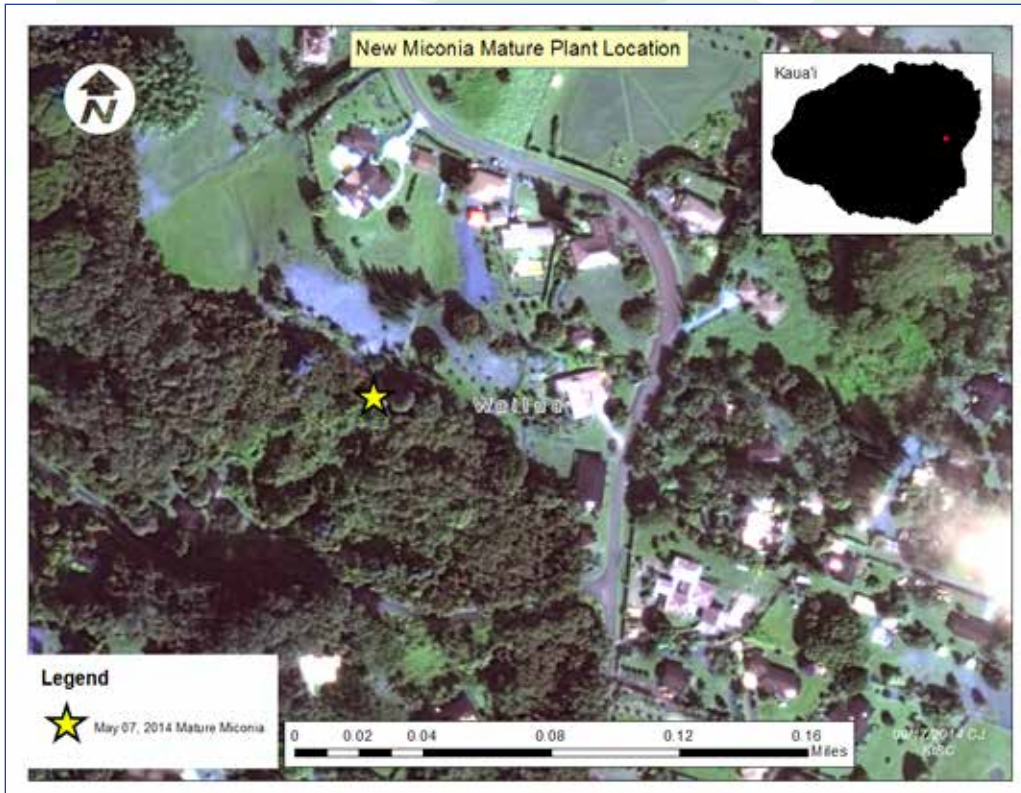
Miconia calvescens

Miconia Ground Survey

- 15 Ground Surveys
- 300 immature treated
- 1 mature treated
- Area covered: 585 acres

Miconia Aerial Survey

- 3 Aerial Surveys (2 with HBT)
- 12 immature treated with HBT
- 0 mature detected
- Area covered: 1,239 acres



Oct 2013 - Sept 2014

7

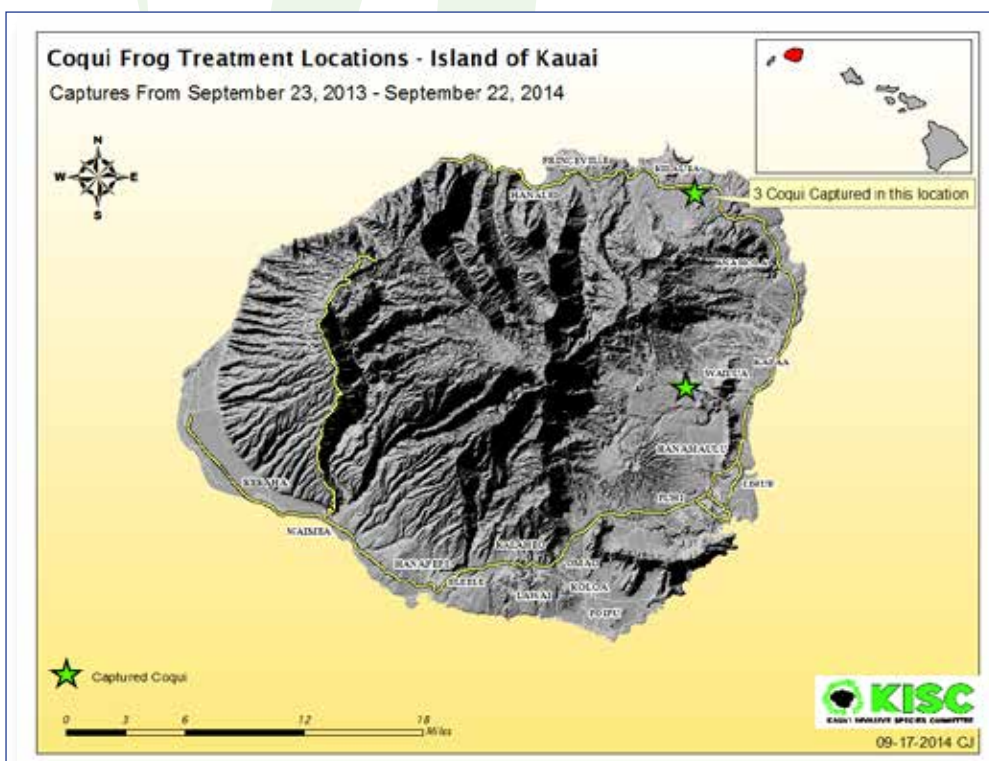
Annual Meeting

Eleutherodactylus coqui

The crew continues monthly night survey in high-risk areas including nurseries and historic capture location.

KISC also continues to assist HDOA by responding to any new reports, like the recent one in Koloa.

4 coqui frogs were caught during this last year.



MEETING SUMMARY

Early Detection Species Update

KISC continued with Early Detection priority species control, monitoring, mapping, and evaluating.

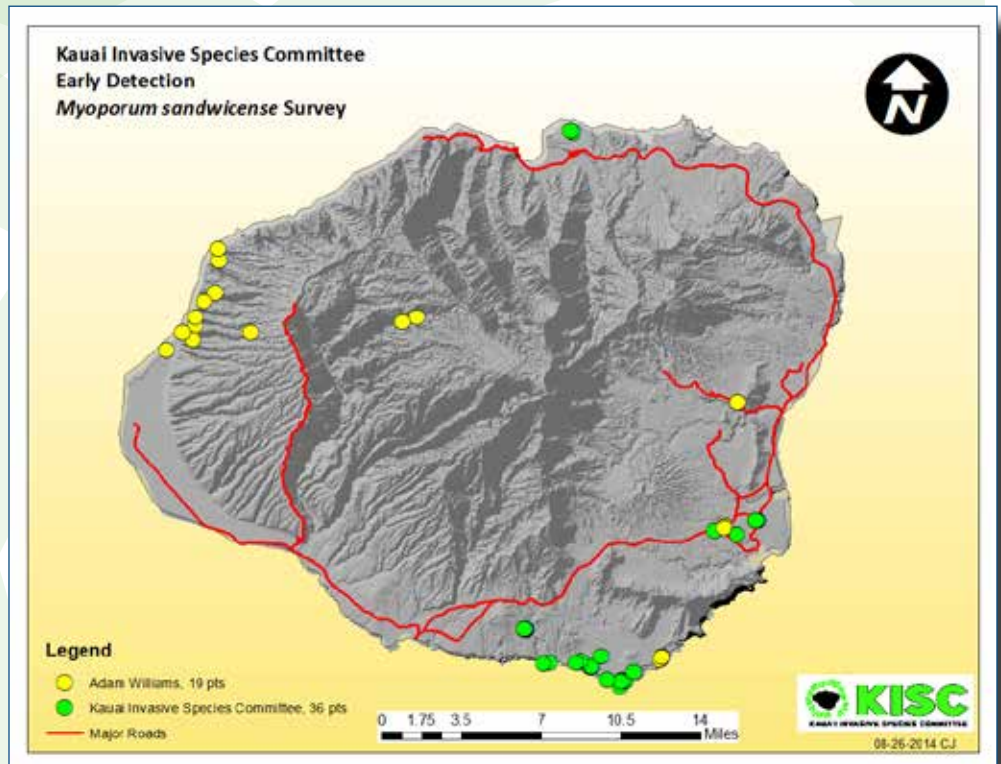
Oct 2013 - Sept 2014

8

Annual Meeting

2014 Naio Roadside Survey

2919 acres were surveyed for *Myoporum sandwicense* as part of the 2014 HDOT SNIPP Grant. All known locations of *Myoporum sandwicense* were mapped and recorded. This data will be included in the action plan for rapid response to Naio Thrips (*Klathrips myopori*) on Kauai. (Naio is not known to be on Kauai as of this meeting).



ED Priority Species monitored this year:

- **Wax Myrtle** (*Morella cirifera*) - No regrowth found on previously controlled population
- **Velvet leaf glory bower** (*Clerodendrum macrostegium*) - No regrowth found on previously controlled population and 1 new location found on SNIPP survey



Mule's foot fern
(*Angiopteris evecta*)

- 114 plants controlled
- 1 new location found



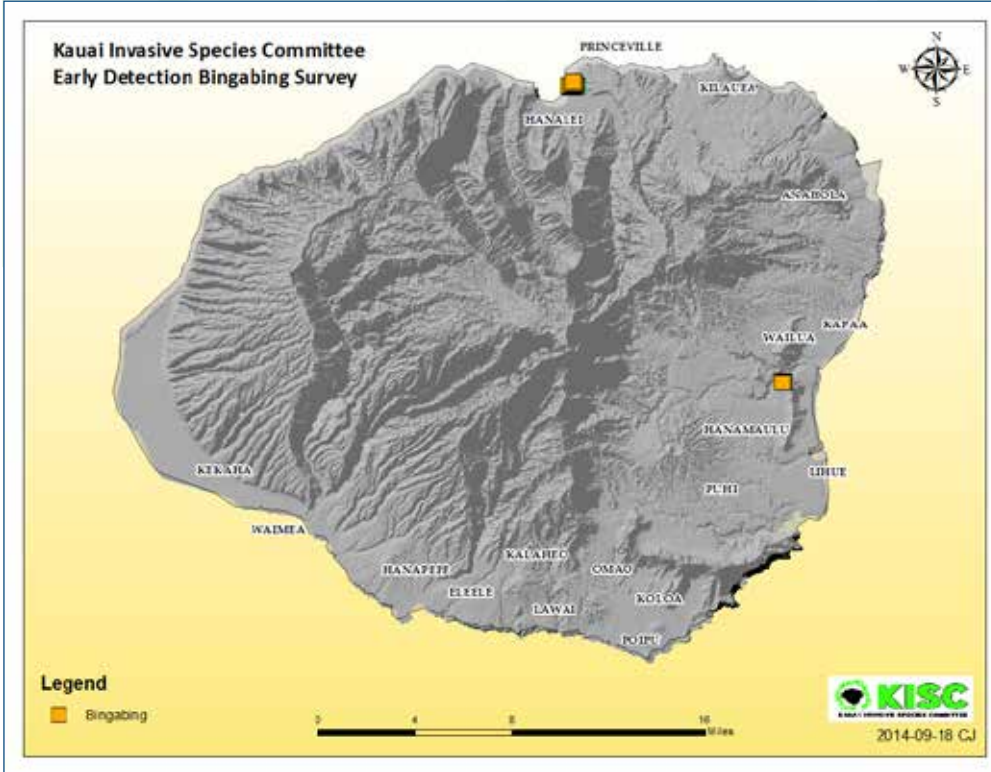
Seasonvine (*Cissus verticulata*)

- Trail treatments - 100 plants
- KISC is currently researching feasible treatment methods.



Grape Ivy (*Cissus nodosa*)

- 65 plants controlled



Two new location of Bingabing (*Macaranga mappa*) were discovered this past year. KISC is currently surveying infested areas before beginning treatment phase.

- 518 plants were discovered in the Hanalei infestation area.
- 41 plants were discovered in the Wailua (Fern Grotto) infestation area.

KISC ED Species currently being assessed for possible control:



Salt Cedar (*Tamarix aphylla*)



Indian Devil Tree (*Alstonia macrophylla*)



Bishop Wood (*Bischofia javanica*)



Feathertop Grass (*Pennisetum villosum*)



Turkey Berry (*Solanum torvum*)



Rubbervine (*Cryptostegia madagascariensis*)

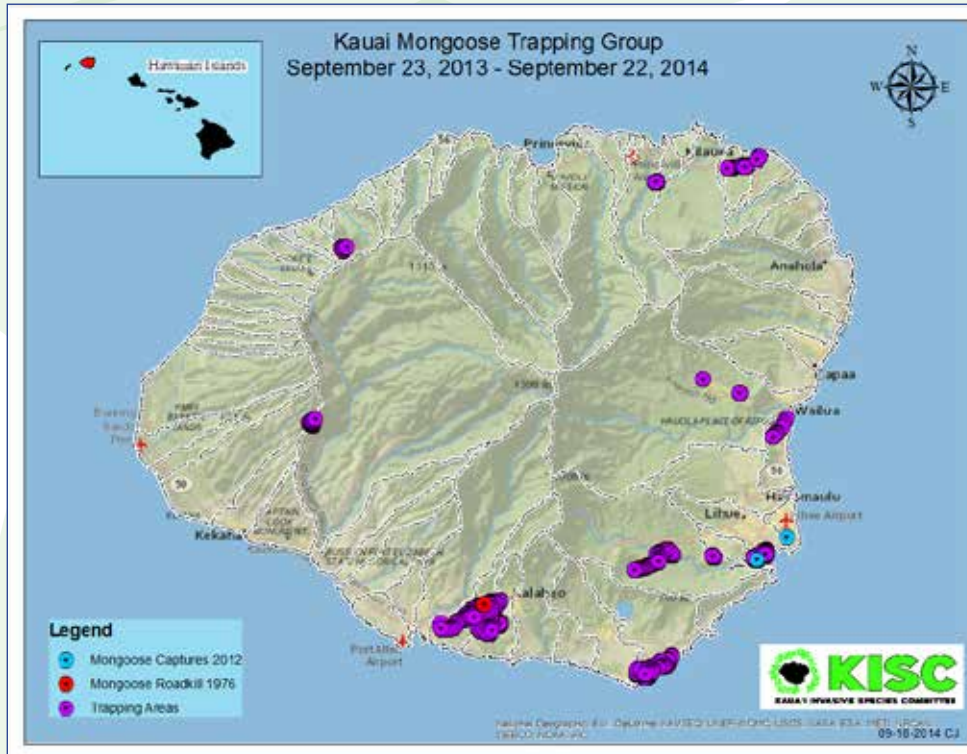
MEETING SUMMARY

Mongoose Update

Oct 2013 - Sept 2014

10

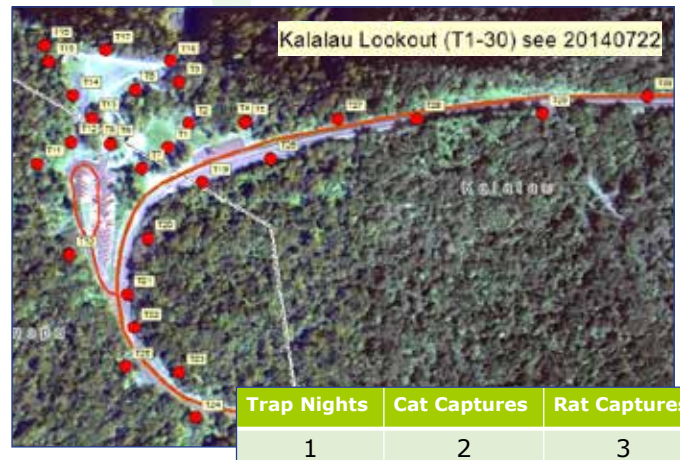
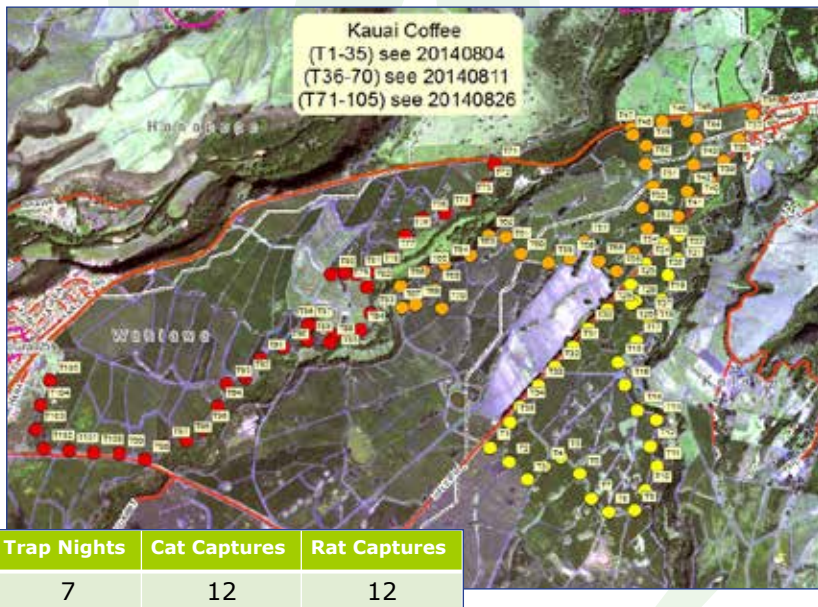
Annual Meeting



During this last year, 66 mongoose sightings were recorded. 26 of these sightings were deemed questionable while 40 were deemed credible. Observers of reported sightings are interviewed and the answers are scored as to whether the sightings are not credible, questionable, or credible.

40 different trapping groups were set on the island this last year. These trapping groups were prioritized by recent credible sightings or a group of sightings in a specific area.

Trapping groups to note...



New collaboration on the horizon...

USFWS, DOFAW, and KISC will begin working on a mongoose action plan for Kauai. This will include possible population study/assessment, methods adjustment, standard trapping protocol, and possible funding sources.

Little Fire Ant Update

MEETING SUMMARY

KISC has been assisting HDOA and the Hawai'i Ant Lab on the LFA infestation in Kalihiwai. In September 2012, work began, under an Experimental Use Permit, to address the infestations in the trees as well as on the ground.



Phase I of the Kauai Little Fire Ant Eradication Project is almost complete. Phase I.a. is complete and involved treatment of approximately 8 acres of landscaped and densely vegetated areas. We are currently working on Phase 1.b. which involves controlling the surviving Phase I colonies. These surviving colonies are mostly found in the tree tops.

Hawaii Ant Lab (HAL) is planning and preparing for Phase II. Phase II

will focus on the treatment on the cliff and coastal areas. Phase II presents challenges with steep cliffs and a wide gully area. HAL, KISC, and HDOA personnel have completed rappel training to assist with this project. Due to the difficulty of accessing the area, members of the Climb Aloha team assisted in the treatment. Phase II will continue with surveys and treatments on the cliff sides and steep terrain. Property surveys for surviving colonies and hotspot treatment will also continue.



In addition, KISC will continue to assist HDOA in actively surveying the island's nurseries, transfer stations, and any possible LFA reports.



Example of steep terrain along the cliff side of the LFA infested area



MEETING SUMMARY

Partnerships and Rapid Response

Oct 2013 - Sept 2014

12

Annual Meeting



- **HDOA**- KISC assisted HDOA in setting traps to survey over 71 acres for Coconut Rhinoceros Beetle (*Oryctes rhinoceros*) - **CRB not found on Kauai**
- **HDOT** - KISC controlled *Calliandra calothyrsus* along the right-of-way by Halfway Bridge (220 mature, 2004 immature plants). *C. calothyrsus* will not be added to the KISC list, it is locally naturalized in areas on Kauai.
- **HDOT**- KISC surveyed over 49 acres along HDOT roadways recently hydro-mulch for Fireweed among other pests along HDOT roadways
- **KNPS**- KISC controlled 9 mature *Citharexylum caudatum*
- **HDOA**- KISC assisted HDOA to survey over 71 acres of bee hives for Varroa Mite and Small Hive Beetle - **Small Hive Beetle found on Kauai. Varroa Mite not found on Kauai.**

Committee Restructure

MEETING SUMMARY

The committee proposed and accepted a new committee structure. KISC currently does not have an active executive committee. The new proposed structure will maintain an executive committee. This will allow the committee to gain strength and maximize efficiency.

Executive Committee

The new KISC Executive Committee is set up to have a rotating Chair. The executive committee will consist of 3 seats: Past Committee Chair, Committee Chair, Committee Chair Elect. KISC opened the Executive Committee positions to any person active within the committee. These are voluntary positions and require a 3 year commitment. The new elected committee positions will start January 2015.

The KISC Chair will chair committee meetings as well as strategic planning meetings. The Chair oversees the KISC Coordinator position and preforms the coordinator's annual evaluation.

Elected Executive Committee:

- **Past Committee Chair** - Allan Reitow (KISC Current Chair), TNC
- **Committee Chair** - Adam Williams, DOFAW
- **Committee Chair Elect** - Tim Flynn, NTBGS

Vision Statement

KISC's Vision Statement will be discussed at future Strategic Planning meetings. Vision statements define the optimal desired future state of what an organization wants to achieve over time. This will provide guidance and inspiration as to what KISC will focus on achieving in 5-10 years. KISC everyday work will ultimately contribute towards accomplishing the vision over the long term.

Action Plan and Strategic Plan

In FY15, KISC will begin working on a new Action Plan, the last KISC Action Plan was updated in 2007. The Action Plan will be based off the new vision statement and KISC Strategic Plan.

KISC will begin hosting Strategic Planning meetings to start the process of developing a Strategic Plan. The four focus areas will include terrestrial plants, aquatic, vertebrate & invertebrate, and mongoose. Each focus area will have its own strategic planning committee.



MEETING SUMMARY

New Strategic Plan

Oct 2013 - Sept 2014

14

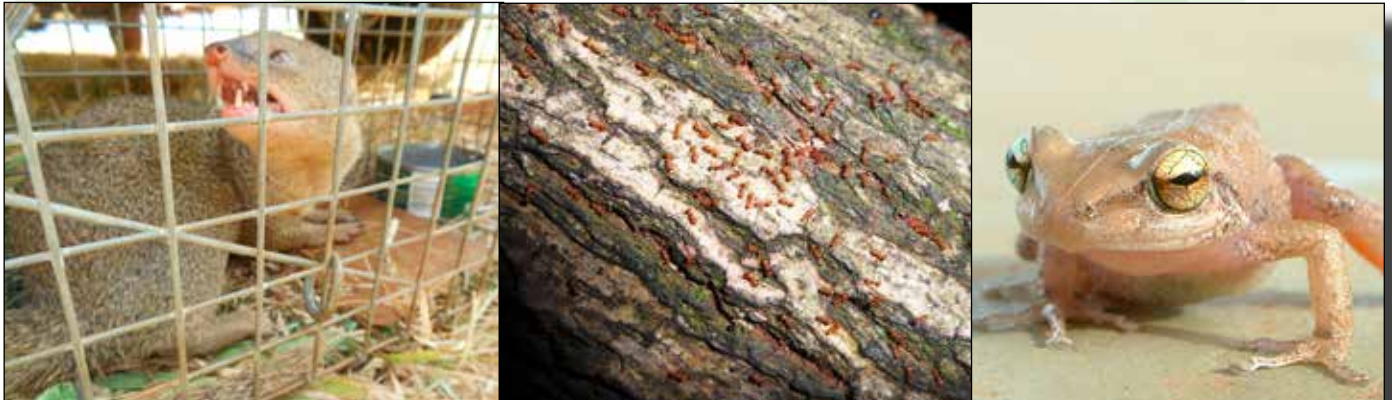
Annual Meeting

Mongoose Strategic Plan

- What: monitoring, standardized methods, and proving if there is a naturalized population on Kauai
- Who: USFWS and Mongoose Strategy Partners
- How: bring together statewide and international mongoose managers/researchers. Utilize HISC vertebrate planner.

Discussion: Michelle Clark, USFWS, noted that USFWS has elevated the issue. USFWS is having internal discussion. DOFAW, USFWS, KISC are pulling their efforts together to look into standardized protocol trapping, population existence/density, and possible quarantine.

The Mongoose Strategic Planning meeting will begin in January.



Invertebrate and Vertebrate Strategic Plan

- What: Coffee Berry Borer, Brown Tree Snake, Rose-ring Parakeet, Little Fire Ant, rusts, scales, assorted bugs, vermin, etc.
- Who: HDOA, USDA Wildlife Services, APHIS, DOFAW, farmers, Hawaii Ant Lab, CTHAR, USGS, USFWS
- How: early detection, surveys, prioritization, control

Discussion: Partnerships are focus in this Strategic Plan. KISC has historically helped with Partnership Projects and Early Detection and Rapid Response for vertebrate and invertebrate species.

Invertebrate and vertebrate Strategic Planning meetings will begin in early 2015. Please let KISC know if you would like to sit on this strategic planning committee.

Aquatic Invasive Strategic Plan

- What: seaweeds, coral, fresh and salt water fish
- Who: DAR, local dive shops, commercial fishermen, watershed partnerships
- How: early detection, survey, prioritization, control

Discussion: Oahu is the only island with an Aquatic Invasive Species Committee. KISC is proposing partnerships with AISC, DAR, and others. KISC previously assisted DAR with Snowflake Coral control in Port Allen. A proposed DAR/KISC partnership involving invasive seaweed monitoring.

Suggestions: KISC to possibly become a member/technical advisor on the Kauai Watershed Alliance. Possible partnership project working with water flow and mosquito populations with KFBRP and USFWS. Kahili ginger in streams is a possible aquatic restoration project.

Aquatic Strategic Planning meetings will begin in early 2015. Please let KISC know if you would like to sit on this strategic planning committee.



Terrestrial Plants Strategic Plan

- What: trees, plants, early detection, rapid response,
- Who: UH CTHAR, CGAPS, KLIC, NTB, DOFAW, KRCP, TNC, KNPS, Plant Pono, landscapers, property owners, nurseries, farmers, etc
- How: early detection, surveys, prioritization, control

Discussion: KISC to open a full time Early Detection Botanist position. This will free the crew to take on more efforts and targets. Position longevity is based on funding.

Can any widespread species be controlled by KISC? Locally? Island wide? Protected Green area work under KISC Vision? - Discussion for planning meeting.

Terrestrial Plants Strategic Planning meetings will begin in early 2015. Please let KISC know if you would like to sit on this strategic planning committee.

MEETING SUMMARY

Oct 2013 - Sept 2014

16

Annual Meeting

Future Meetings

KISC annual meeting: September 2015

Strategic Planning meetings: Early 2015

Please notify KISC if you would like to participate in any of the strategic planning meetings.

Mahalo!

Meeting Chair: Tim Flynn

Presenters: Bill Lucey, Ray Kahaunaele, Tiffani Keanini, Craig Kaneshige, Pat Gmelin, and Mugs Kaneholani.

Attendees: Ray Kahaunaele, Bill Lucey, Tiffani Keanini, Cleve Javier, Cherith Andrade, Pat Gmelin, Tim Flynn, Ken Taylor, Robert Cecconi, Sherri Paul, Craig Kaneshige, Mugs Kaneholani, Vincent Vea, Joseph Aguon-Kona, Ambyr Makiao-Lee, Denis Duenas, Adam Williams, Laura Arnold, Ann Kam, Amanda Skelton, Lisa Crampton, Mimi Olry, Eben Manini, Francis "Bully" Mission.

(Please contact us if you are interested in a printed copy of this Meeting Summary)



Phone: 808-821-1490

Physical Address: 7370 Kuamo'o Rd., #K

Kapa'a, HI 96746

E-mail: kisc@hawaii.edu

www.kauaiisc.org

KISC is a voluntary partnership of government, private and non-profit organizations, and concerned individuals working to eliminate or control the most threatening invasive plant and animal species in order to preserve Kauai's native biodiversity and minimize adverse ecological, economic and social impacts.