

2022

ANNUAL HIGHLIGHTS



Join our
Mailing List



Visit our
website



KISC is a project of the Pacific Cooperative Studies Unit (PCSU) University of Hawai'i at Mānoa.

Fieldwork

at a Glance

We operate island-wide on both private and public land to detect new invasive species early and control target species before they make a lasting impact.

7,545

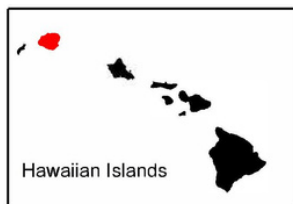
Acres surveyed

1,881

individual targets removed

14

high-risk species controlled



Kauai Invasive Species Committee 2022 Field Activities



Legend

Rapid Response & Survey

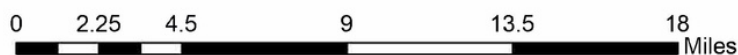
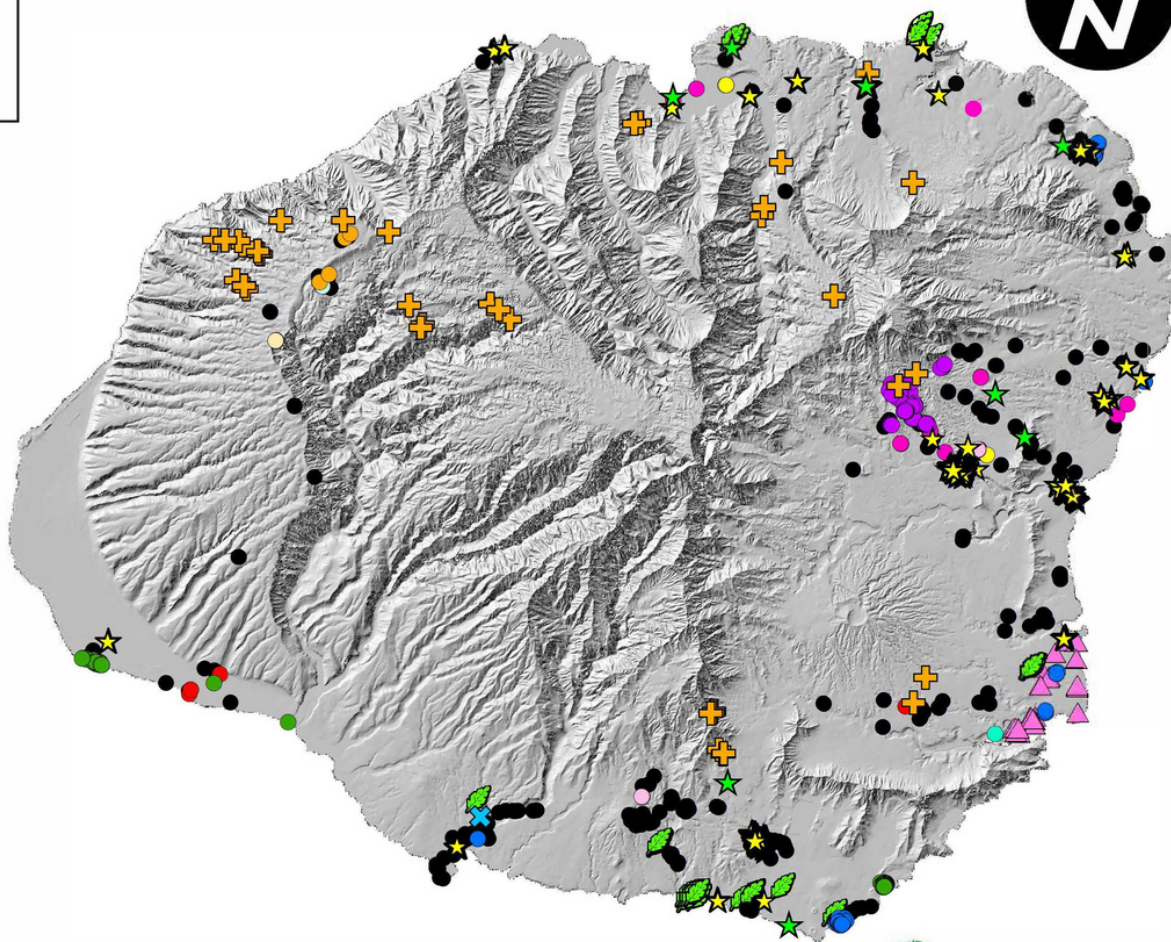
- Ceratocystis species*
- Eleutherodactylus coqui*
- Hypothenemus hampei*
- Wasmannia auropunctata*

Plant Survey & Control

- Arundo donax*
- Buddleja paniculata*
- Clerodendrum macrostegium*
- Coccinia grandis*
- Crassula multicava*
- Miconia calvenscens*
- Morella cerifera*
- Piper auritum*
- Prosopis juliflora*
- Pueraria montana var. lobata*
- Vicia sativa*

Early Detection Survey

- Early Detection Survey Points
- Naio Survey Locations
- Mamalu Poepoe Trapping



EARLY DETECTION

KISC's Early Detection and Rapid Response program strengthens multi-agency rapid response partnerships to build capacity on Kauai and leverage the limited resources available for invasive species prevention.

0
New Detections
Africanized Honey Bee
Coconut Rhinoceros Beetle
Naio Thrips

KISC teams monitor high-risk sites for new pest introductions.

8
swarm traps
monitored
monthly at
the ports

6
Coconut
Rhinoceros Beetle
traps monitored
monthly

53
naio locations for
9 populations
areas surveyed
for thrips

KISC Plant Early Detection program systematically inventories, maps, and evaluates potential early plant invaders island-wide to prioritize new species for control.

244
acres ground
surveyed for
new plant
species

2,732
acres surveyed
by roadside for
new plant
species



Early detection and rapid response efforts were completed in partnership with Hawaii Invasive Species Council, Mamalu Poepoe, Hawaii Department of Agriculture, Kokee Resource Conservation Program, Kauai Division of Forestry and Wildlife, UH College of Tropical Agriculture and Human Resources



RAPID RESPONSE

KISC functions as an island-wide rapid response and control team that serves a gap filling role and helps coordinate multi-agency efforts to prevent the widespread establishment of high-risk invasive species on Kauai.



Coqui Frogs
Eleutherodactylus coqui

16
coqui frogs captured

6
locations island-wide



LITTLE FIRE ANTS

Wasmannia auropunctata

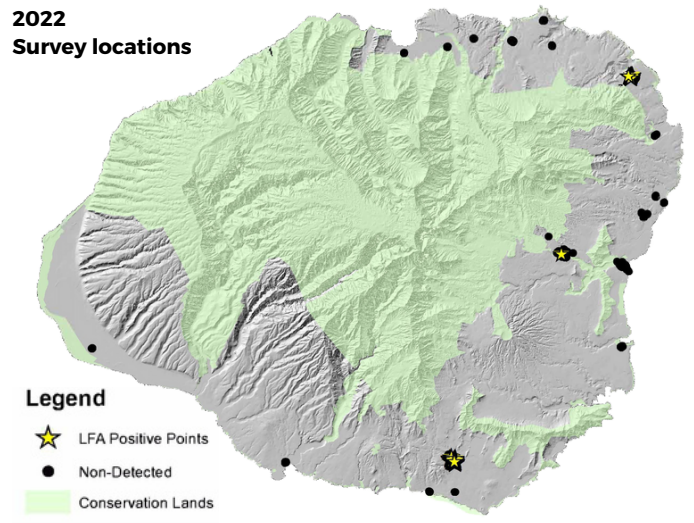
2 new LFA locations were detected in 2022. Delimiting surveys are underway to establish the population perimeter before we can define how best to control the infestations and develop the multi-agency response plan.

WAILUA
Detected June 2022
>16 acres

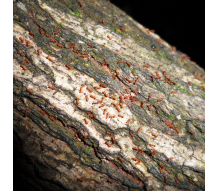
KOLOA / OMAO
Detected Oct 2022
>55 acres

At the previously detected sites, the multiagency, multiyear eradication effort has proved promising with LFA now undetectable at both the Kalihiwai and Kilauea sites and reduced at the Moloaa site.

KISC continued to complete island-wide LFA surveys to aid in early detection of new sites before widespread establishment. Island-wide surveys were conducted at high-risk sites including County green waste and transfer stations, private green waste stations, nurseries, ports, cemeteries



2
newly detected LFA sites on Kauai



5
known LFA sites
3 are active

195
acres surveyed for LFA

7,238
vials used during island-wide LFA surveys

54
acres treated for LFA

LONG TERM CONTROL & ERADICATION

KISC's continued, long-term, control efforts help prevent the spread of high-impact species into our watersheds and agricultural areas. We prioritize species that are recognized as having the greatest potential to impact native biodiversity and agriculture, and where the use of limited resources are most likely to be successful.

Miconia

Miconia calvescens



521
immature
plants
controlled

8
mature
plants
controlled

Long Thorn Kiawe

Prosopis juliflora



168
immature
plants
controlled

Ivy Gourd

Coccinia grandis



974
immature
plants
controlled

17
mature
plants
controlled

False Kava

Piper auritum



63
mature
plants
controlled

Rapid Ohia Death

Ceratocystis lukuohia; *C. huliohia*



29
ohia trees
sampled

Arundo

Arundo donax



58
mature
plants
controlled

COMMUNITY OUTREACH

KISC works closely with the community to raise awareness and enhance invasive species management support. We create and deliver educational programs and effective communications tailored for Kauai's community, schools, and businesses to highlight their role to help preserve Kauai's native biodiversity and minimize adverse ecological, agricultural, economical, and cultural impacts.

