

Little Fire Ant Quick Sort

Is your ant a solid color?

NO

NOT LFA

EXAMPLE: Big-headed ant



(*Pheidole megacephala*)

Common ant in Hawaii (between 1/16-1/8 inch long).

YES

Is your ant orange, reddish, or light brown?

NO

NOT LFA

EXAMPLE: Black house ant



(*Ochetellus glaber*)

Common ant in Hawaii (1/8 inch long).

YES

1/16 of an inch or smaller?

NO

NOT LFA

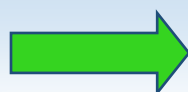


Top: Tropical fire ant (*Solenopsis geminata*) is 1/8 inch. Bottom: Little fire ant (*Wasmania auropunctata*) is 1/16 inch.

YES

WARNING!!

This ant could be LFA or a look-a-like. A biologist will be needed to make a positive ID.

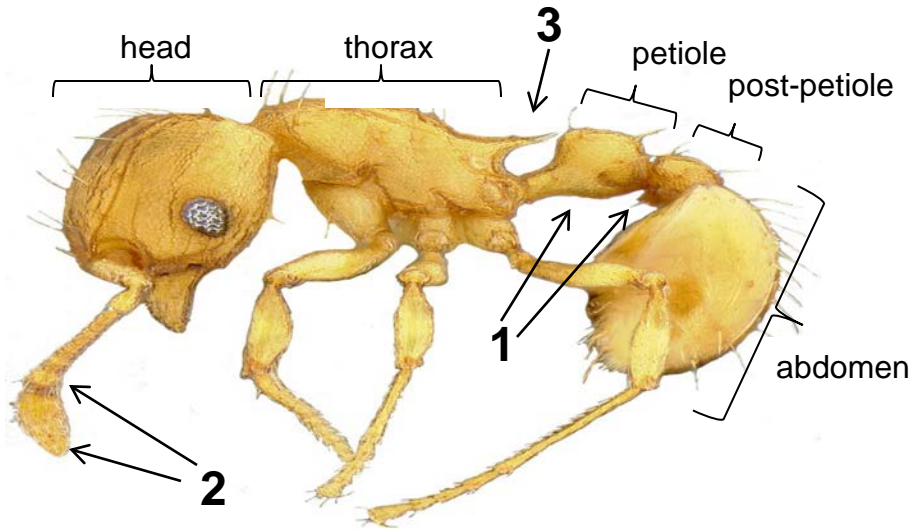


Submit ants for ID

Mail or drop off ants in sealed bag:
Hawaii Department of Agriculture
4398A Pua Loke St. Lihue HI 96766 OR
Kauai Invasive Species Committee
7370 Kuamoo Rd #K. Kapaa HI 96746
For more information, call 643-PEST

Is it Little Fire Ant?

(After conducting the Quick Sort, use this if you have a microscope)



Look for the following features in the order listed:

1. They have two "bumps" between the thorax and abdomen (a petiole and post-petiole). Yes?, go to 2
2. The last 2 segments of the antenna are much bigger than all the others (a 2-segmented antenna club). Yes?, go to 3
3. They have two long propodeal spines—two spines protruding from the end of the thorax that are almost long enough to reach to the first "bump" (only one spine may be visible when the ant is on its side—just check its length).

If you answered "yes" to all three, or if you are unsure, take your ants to HDOA for confirmation and help—it is very difficult to tell some of these species apart, but it is very important! If you answered "no" to one of the above, look at some of the look-alikes.

If it isn't LFA, what could it be?

(These ants are present in Hawaii and are about the same size, shape and approximate color as LFA)

Tetramorium similimum



Different because:

- 3 segmented antennal club
- Short propodeal spines
- Round eyes (LFA have teardrop shape)

Solenopsis papuana



Different because:

- 1st antennal segment very large
- No propodeal spines
- Tiny eyes

Plagiolepis alluaudi



Different because:

- No antennal club
- No propodeal spines
- Only 1 bump between thorax and abdomen

Solenopsis sp. nr molesta



Different because:

- Pale yellow color
- No propodeal spines
- Tiny eyes